



**Ignite your
potential**

Open Day

Preston Campus

Sunday 12 October 2025, 9am - 3pm



**University of
Lancashire**

Welcome to our Preston Campus

A message from our Vice-Chancellor,
Professor Graham Baldwin



"I'm delighted that you're thinking about coming to study at the University of Lancashire. Over the course of the day you'll discover why our University is such a fantastic place to study and why the student experience we offer is truly life-changing.

We believe in enabling all our students to seize every opportunity to flourish in education, at work and for life. We'll be here to support you every step of your journey – from the day you arrive until the day you graduate, and beyond. University is about much more than just gaining a degree. We work hard to make sure that it's a fantastic and memorable journey.

By combining academic excellence with real-world teaching, we'll give you the valuable hands-on skills and experience that today's industry needs. That's why our graduates are in such high demand by the world's top companies. When you join us you can be confident that we'll help you realise your potential and set you on course for a successful future.

I really hope that your Open Day gives you a sense of why our University is such a special place, why our students love it here, and why our graduates tell us that the time they spent with us transformed their lives. I hope we can help transform yours too."

Have a great day!

A handwritten signature in black ink that reads "Graham Baldwin". The signature is written in a cursive, flowing style.

**Join me at a
welcome talk**
Times and locations
are listed on
page 6.

Contents

| | |
|--------------------------------|----|
| Make the most of your day | 4 |
| Attend a talk | 6 |
| Take a tour | 8 |
| Affordable accommodation | 10 |
| Meet our Student Support teams | 12 |
| Subject sessions | 14 |
| My Open Day | 34 |
| So much more to offer | 36 |
| Campus map | 38 |



Top 10 in the UK for affordable student accommodation, ranked 6th out of over 80 cities

StudentCrowd, 2025



Join a university that's in the top 7% worldwide

Center for World University Rankings (CWUR) 2024



Silver award

Teaching Excellence Framework (TEF) 2023



66% of our research is internationally excellent or world-leading

REF2021: 66% of submissions were ranked as 3* or 4*

Photography and filming are in progress during this event. If you do not wish to be photographed or filmed, please notify the photographer.

Make the most of your day

1. Check-in on arrival



Check-in opens at **9am** in the Student Centre.
Please have your QR code ready to scan.

2. Attend a welcome talk



Get a 30-minute introduction from our Vice-Chancellor.
See details on page 6.

3. Discover your subject



Check pages 14-33 to explore the available subject talks, facilities tours, and taster sessions.

4. Visit a subject stand



Drop in and meet our expert tutors and current students.
A great opportunity to have a one-to-one chat and ask questions about your course. **Open from 9am - 3pm.**
See pages 14-33 to find your subject stand location.

5. Grab a free hot or cold drink



You'll be given a drink voucher and treat token when you check-in which you can redeem in a number of our campus eateries.
See page 35 for details.



Grab a breakfast barm for just £1

Available in Foster and Harrington Refectories until 11.30am

6. Go on a tour



Our current students can't wait to show you around.

We have campus tours and accommodation guided tours to explore our Preston campus. You can also take a guided tour of the Library, Worldwide Centre or Sports Arena.

See tour details on pages 8-9.

7. Go to a talk



We have student advice talks on accommodation, Degree Apprenticeships, financial support and how to write an impressive personal statement.

See pages 6-7 for details.

8. Meet our Student Support teams



Our Student Support services can help you get the most out of university life. Meet our friendly teams on the Upper Ground Floor of the Student Centre, available **9am - 3pm**.

9. Meet our current students



Look out for our Student Ambassadors, wearing red tops. Have a chat, ask for directions, or ask questions about student life.

10. Find your way around



Make use of the campus map at the back of this programme. We've highlighted key buildings to help you find your way.

Don't worry if you aren't sure where to go. Staff and Student Ambassadors will be around to guide you. See pages 38-39.

Attend a talk

All of our talks are 30 minutes.

Welcome talk

9.40am - 10.10am Harrington Building, Ground Floor, Lecture Theatre

10.20am - 10.50am Harrington Building, Ground Floor, Lecture Theatre

12.50pm - 1.20pm Engineering Innovation Centre, Third Floor, 317

Vice-Chancellor Professor Graham Baldwin is here to share who we are and how we can help you succeed in your studies.

Financial support

10.20am - 10.50am Adelphi Building, Ground Floor, Lecture Theatre 1

12.30pm - 1pm Foster Building, Ground Floor, Lecture Theatre 3

Learn from the experts and get top tips on funding your studies and managing your money whilst at university.

Stand located in the Student Centre, Upper Ground Floor, Study Area.

Accommodation

11.45am - 12.15pm Foster Building, Ground Floor, Lecture Theatre 3

1pm - 1.30pm Adelphi Building, Ground Floor, Lecture Theatre 1

Our accommodation team are excited to show you our city centre on-campus accommodation offering and answer any questions about the application process.

Stand located in the Student Centre, Upper Ground Floor, Study Area.

Personal statement workshop

9.40am - 10.10am Greenbank Building, Ground Floor, Lecture Theatre

1.20pm - 1.50pm Foster Building, Ground Floor, Lecture Theatre 3

Get tips and expert advice to make your personal statement stand out and shine.

Stand located in the Student Centre, Upper Ground Floor, Social Space.

Degree Apprenticeships

12.30pm - 1pm Foster Building, Ground Floor, Lecture Theatre 4

Have you considered a Degree Apprenticeship? We're here to support you with the next steps and help you explore your study options.

Stands located in the Student Centre, Engineering Innovation Centre and Harrington Building.

Student life

1.30pm - 2pm Leighton Building, Ground Floor, Room 003

Don't just take our word for it, find out what university life is really like from our students. Listen to their first-hand experiences and study journeys.



Take a tour

Campus and accommodation guided tours

Departing from: Upper Ground Floor in the Student Centre

Duration: Approximately 45 minutes

Times: Running frequently from 9am, final tour at 2pm

Discover our Preston Campus through a guided tour.
Our Student Ambassadors can't wait to show you around.

Sports Arena

Departing from: Coach departing from Maudland Road,
next to the Engineering Innovation Centre

Duration: Approximately 40 minutes

Times: 12.40pm

Our Sports Arena is Preston's premier multi-sports venue. The arena features a variety of outdoor sports facilities, including two 3G pitches, a hockey pitch and recently resurfaced athletics track.

**Sport and Physical Activity stand located in the Student Centre,
Upper Ground Floor, Foyer.**



Library tours

Departing from: Upper Ground Floor in the Student Centre

Duration: Approximately 30 minutes

Times: 9.30am, 11.45am, 1pm and 2.30pm

Take a guided tour of the Library where you will discover the services and resources available to students.

Library stand located in the Library, Ground Floor.

Worldwise Centre facilities tour

Departing from: Adelphi Building, First Floor, Worldwise Centre Open Area

Duration: Approximately 30 minutes

Times: 12 noon and 2.30pm

Discover a vibrant space designed to inspire language learning.

Join a guided tour of our state-of-the-art facilities and learning resources.

Global Opportunities, Worldwise and Study Abroad stands located in the Student Centre, Upper Ground Floor, Study Area.



Affordable accommodation

There's something special about coming to stay in University accommodation, especially if it's your first time away from home.

As well as the convenience of being located on campus, you'll be part of a welcoming halls community where you'll meet new friends, socialise, and make lasting memories. It's important to us that it feels like your home from home.

We guarantee a room in halls, on campus, for all new full-time students at our Preston Campus.

Explore your accommodation options

You can find out more about accommodation throughout the day. A range of private accommodation options will also be open to view, giving you the chance to explore Preston's impressive accommodation offering.

Take a guided tour of our University accommodation

Running throughout the day, departing from the **Upper Ground Floor of the Student Centre** (the last tour is at 2pm) or drop in throughout the day.

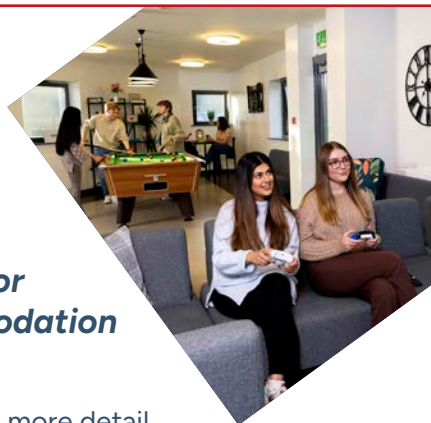
City living at affordable prices

Looking for student living that fits your budget?

We're ranked 6th in the UK for affordable student accommodation
(StudentCrowd, 2025)

Our Financial Support Hub goes into more detail about the financial side of student life and all the benefits and perks you'll get to enjoy when you study with us. Discover top tips for budgeting and money matters.

lancashire.ac.uk/support/financial-support



| University accommodation | | |
|---|--|--|
| Name and postcode | Description | How to view |
| Derwent Hall PR1 7QR | Economy standard rooms. This includes shared bathroom and kitchen facilities. Also features an enclosed landscaped garden area. | Student led guided tours run throughout the day, departing from the Upper Ground Floor in the Student Centre (the last tour is at 2pm). Alternatively, you can drop into our accommodation throughout the day. Our flats are open for self-guided tours until 3.30pm. |
| Ribble Hall PR1 7QS | Premium standard rooms which include shared bathroom, kitchen and lounge areas with a TV. Economy standard rooms which include shared bathroom and kitchen facilities. | |
| Roeburn Hall PR2 2QQ | En-suite rooms with a shared kitchen and common room, featuring an Xbox One, board games, pool table, a 75" TV screen and DVD player, and giant beanbags. | |
| Whitendale Hall PR1 7BG | Premium standard rooms which include shared bathroom, kitchen and lounge areas with a TV. Economy standard rooms which include shared bathroom and kitchen facilities. | |
| IQ Kopa (leased hall) PR1 1LR | A variety of en-suite rooms and studios. The property also features social and study spaces as well as a gym and lounge. | Pop in throughout the day to view. |

Feel right at home

- ✓ All-inclusive bills and free internet access
- ✓ A short walk to Preston city centre
- ✓ Access to our friendly on-site Residences Team – here to help with anything, from a leaky tap to accessing wellbeing support
- ✓ Security staff on site 24/7 for your safety

Study in a great city centre location without breaking the bank. Our student accommodation starts at just £87 per week, almost half the national average.*

Complete University Guide, 2024

*National average: £166 per week

Meet our Student Support teams

Our friendly Student Support teams are available to meet you **in our Student Centre (9am - 3pm)**. They'll be happy to answer all your questions.

Accommodation

Explore accommodation options, costs and how our Residences Team will support you.

Stand located in the Student Centre Upper Ground Floor, Study Area.

Admissions

Find out how to apply, when to apply, and what happens next.

Stand located in the Student Centre Upper Ground Floor, Social Space.

Financial support

Explore what funding options are available to support your studies, and what support is available to students.

Stand located in the Student Centre Upper Ground Floor, Study Area.

Inclusive support

Get to know how we can support you if you have a disability or learning difficulty.

Stand located in the Student Centre Upper Ground Floor, Study Area.

Personal statement drop-in

Create a personal statement that will help your application stand out. If you've already started your personal statement, bring a copy with you and get some feedback from our advisers.

Stand located in the Student Centre Upper Ground Floor, Study Area.



Counselling, mental health and wellbeing

Our dedicated service is here to assist students feeling overwhelmed, stressed, or facing health, personal, or study challenges.

Stand located in the Student Centre Upper Ground Floor, Study Area.

Library

You can also visit the Library stand to learn more about our facilities, Learning Information Services and our Equipment Hub.

Stand located in the Library, Ground Floor.

Student Achievement Service

Our team can provide information on careers advice, student mentoring, study skills and volunteering at the University.

Stand located in the Student Centre Upper Ground Floor, Study Area.

We have committed to cultural change in university mental health by joining the University Mental Health Charter Programme



Visit the Library any time during the event or take a guided tour to see the facilities, resources and support available to you.

See page 9 for details.

Find the course that's right for you

Our subject talks, facilities tours and taster sessions will give you everything you need to know about your course.

Each session lasts about 30 minutes (unless stated), and you can attend as many as you like. Most of our subject sessions run twice throughout the day so you can choose the times that suit you.

Don't worry if you miss a subject talk, you can head to our subject stands to speak to one of our course tutors all day from 9am - 3pm.

Check the subject listings on pages 15-33 to find the stand.

Subject talks

You'll get an overview of the subject and courses from our teaching staff, including:

- Course content
- Entry requirements
- Placement options
- Career destinations

Subject tours and showcases

Some subjects offer a tour of the facilities you'll use on the course, a tour of the department or a tour of student work. It can be another opportunity to meet tutors and students on the course.

Taster sessions

Join an interactive taster session to experience what it's like to study with us.

Considering a Degree Apprenticeship?

Find out more by visiting our stands in the Student Centre, Engineering Innovation Centre and Harrington Building or attend our talk.

See page 7 for details.

Block Learning

We're moving to block learning over the next few years. Courses taught in this way are clearly identified on individual course pages on our website.

Where applicable, information about block learning will be included in your subject talk.

Subject listings

Archaeology Subject stand: Foster Building

Archaeology and Anthropology courses: BSc (Hons) Archaeology, BSc (Hons) Archaeology and Anthropology, MSci Archaeology

| | | |
|---------------------|-----------------------------------|--|
| Subject talk | 11am - 11.30am or 1.30pm - 2pm | Leighton Building, First Floor, Room 109 |
|---------------------|-----------------------------------|--|

| | | |
|-------------------------|--------------------------------------|--|
| Subject showcase | 11.30am - 12 noon or 2pm - 2.30pm | Maudland Building, First Floor, Room 108 |
|-------------------------|--------------------------------------|--|

Architecture, Building and Sustainable Environment Subject stand: Engineering Innovation Centre

| | | |
|---------------------|-----------------------------------|--|
| Welcome talk | 11am - 11.30am or 1.30pm - 2pm | Engineering Innovation Centre, Third Floor, Room 317 |
|---------------------|-----------------------------------|--|

| | | |
|-----------------------------------|---|--|
| Parents and carers Q&A | 11.35am - 12.05pm or 2.05pm - 2.35pm | Engineering Innovation Centre, Third Floor, Room 317 |
|-----------------------------------|---|--|

Architecture courses: BSc (Hons) Architecture, BSc (Hons) Architectural Technology Degree Apprenticeship, Foundation Year pathways

| | | |
|------------------------------|--------------------------------------|---|
| Subject talk and tour | 11.40am - 12.30pm or 2.10pm - 3pm | Harris Building, First Floor, Room 144c |
|------------------------------|--------------------------------------|---|

Construction and Surveying courses: BSc (Hons) Construction Project Management, BSc (Hons) Quantity Surveying, BSc (Hons) Building Surveying, BSc (Hons) Facilities Management, Foundation Year pathways

| | | |
|--------------------------------|--------------------------------------|--|
| Subject talk and taster | 11.40am - 12.30pm or 2.10pm - 3pm | Harris Building, Third Floor, Room 304 |
|--------------------------------|--------------------------------------|--|

Sustainable and Renewable Energy courses: BEng (Hons) Renewable and Sustainable Energy Engineering, Foundation Year pathways, Sandwich Placement options

| | | |
|------------------------------|--------------------------------------|---|
| Subject talk and tour | 11.35am - 12.30pm or 2.05pm - 3pm | Engineering Innovation Centre, Second Floor, Room 211 |
|------------------------------|--------------------------------------|---|

Business

Subject stand: Harrington Building

Accounting and Finance courses: BA (Hons) Accounting and Finance, BA (Hons) Accounting and Financial Studies, Foundation Year pathways

Business courses: BA (Hons) Business and Management, BSc (Hons) Business and Marketing, BA (Hons) Business and Human Resource Management, BA (Hons) International Business, Foundation Year pathways

Tourism and Hospitality courses: BA (Hons) International Tourism Management, BA (Hons) International Hospitality Management, BA (Hons) Management in Events (Top-up), BA (Hons) Management in Hospitality (Top-up), BA (Hons) Management in Tourism (Top-up), Foundation Year pathways

Welcome to the Business School

11am - 11.45am
or 1pm - 1.45pm

Brook Building, Ground Floor,
Room 009

Subject showcase

11.45am - 12.15pm
or 1.45pm - 2.15pm

Brook Building, Ground Floor,
Room 009

Computer Science and Electrical and Robotics Engineering

Subject stand: Engineering
Innovation Centre

Welcome talk

11am -11.30am
or 1.15pm - 1.45pm

Engineering Innovation Centre, First Floor,
Room 111

Parents and carers Q&A

11.35am - 12.05pm
or 2.05pm - 2.35pm

Engineering Innovation Centre, Third Floor,
Room 317

Computer Science courses: BSc (Hons) Artificial Intelligence and Data Science, BSc (Hons) Computing, BSc (Hons) Computer Science, BSc (Hons) Computer Games Development, BSc (Hons) Computer Networks and Security, BSc (Hons) Cyber Security, BSc (Hons) Software Engineering, Foundation Year pathways

Subject talk and taster

11.40am - 12.45pm
or 1.55pm - 3pm

Computing and Technology Building,
Ground Floor, Foyer

Electrical and Robotics Engineering courses: BEng (Hons) Electrical and Electronic Engineering, BEng (Hons) Electronic Engineering, BEng (Hons) Robotics Engineering, Foundation Year pathways

Subject talk and taster

11.40am - 12.45pm
or 1.55pm - 3pm

Computing and Technology Building,
First Floor, Room 129

| Design | | Subject stand: Student Centre |
|---|--------------------------------------|--|
| Employability Q&A panel | 1pm - 1.30pm | Victoria Building, Ground Floor, Room 005 |
| Find out about career opportunities in the creative industries and chat to our course leaders about how we support employability. | | |
| Foundation | | |
| Subject talk | 11am - 11.30am or 1.30pm - 2pm | Hanover Building, Ground Floor, Room 017 |
| Subject tour | 11.30am - 12 noon or 2pm - 2.30pm | Hanover Building, Ground Floor, Foyer |
| BA (Hons) Graphic Design | | |
| Subject talk | 11.30am - 12 noon or 2pm - 2.30pm | Victoria Building, Second Floor, Room 204 |
| Subject tour | 12 noon - 12.30pm or 2.30pm - 3pm | Victoria Building, Second Floor, Room 204 |
| BA (Hons) Illustration | | |
| Subject talk | 11.30am - 12 noon or 1.30pm - 2pm | Victoria Building, Second Floor, Room 214a |
| Subject tour | 12 noon - 12.30pm or 2pm - 2.30pm | Victoria Building, Second Floor, Room 214a |
| BA (Hons) Interior Design | | |
| Subject talk | 11.30am - 12 noon or 1.30pm - 2pm | Victoria Building, Second Floor, Room 220 |
| Subject tour | 12 noon - 12.30pm or 2pm - 2.30pm | Victoria Building, Second Floor, Room 220 |



| Engineering | | Subject stand: Engineering Innovation Centre |
|--|---|--|
| Welcome talk | 11am -11.30am or 1.30pm - 2pm | Foster Building, Ground Floor, Lecture Theatre 1 |
| Parents and carers Q&A | 11.35am - 12.05pm or 2.05pm - 2.35pm | Foster Building, Ground Floor, Lecture Theatre 1 |
| Aerospace Engineering courses: BEng (Hons) Aerospace Engineering, BEng (Hons) Aerospace Engineering with Pilot Studies, MEng (Hons) Aerospace Engineering, MEng (Hons) Aerospace Engineering with Pilot Studies | | |
| Subject talk and taster: Flight Simulation Suite | 11.35am - 12.30pm or 2.05pm - 3pm | Engineering Innovation Centre, Lower Ground Floor, Room 007 |
| Civil Engineering courses: BEng (Hons) Civil Engineering, Foundation Year pathways | | |
| Subject talk and taster | 11.35am - 12.30pm or 2.05pm - 3pm | Harris Building, First Floor, Room 130 |
| Fire and Leadership Studies courses: BSc (Hons) Fire and Leadership Studies, Foundation Year pathways | | |
| Subject talk and tour | 11.35am - 12.30pm or 2.05pm - 3pm | Engineering Innovation Centre, Second Floor, Room 201 |



Fire Engineering and Fire Safety courses: FdSc Fire Safety Engineering, BEng (Hons) Fire Engineering, BSc (Hons) Fire Safety and Risk Management, BSc (Hons) Fire Safety Engineering (Top-up), BSc (Hons) Fire Safety Management (Top-up)

| | | |
|------------------------------|--------------------------------------|--|
| Subject talk and tour | 11.35am - 12.30pm or 2.05pm - 3pm | Engineering Innovation Centre, Second Floor, Room 201 |
|------------------------------|--------------------------------------|--|

Mechanical Engineering courses: BEng (Hons) Mechanical Engineering, BEng (Hons) Mechanical Maintenance Engineering (Top-up), BEng (Hons) Motorsports Engineering, BEng (Hons) Mechatronics and Intelligent Machines, BEng (Hons) Mechatronics and Intelligent Machines (Top-up), BEng (Hons) Professional Engineering (Manufacturing), MEng (Hons) Mechanical Engineering, MEng (Hons) Motorsports Engineering, Foundation Year pathways

| | | |
|------------------------------|--------------------------------------|---|
| Subject talk and tour | 11.35am - 12.30pm or 2.05pm - 3pm | Engineering Innovation Centre, First Floor, Room 111 |
|------------------------------|--------------------------------------|---|



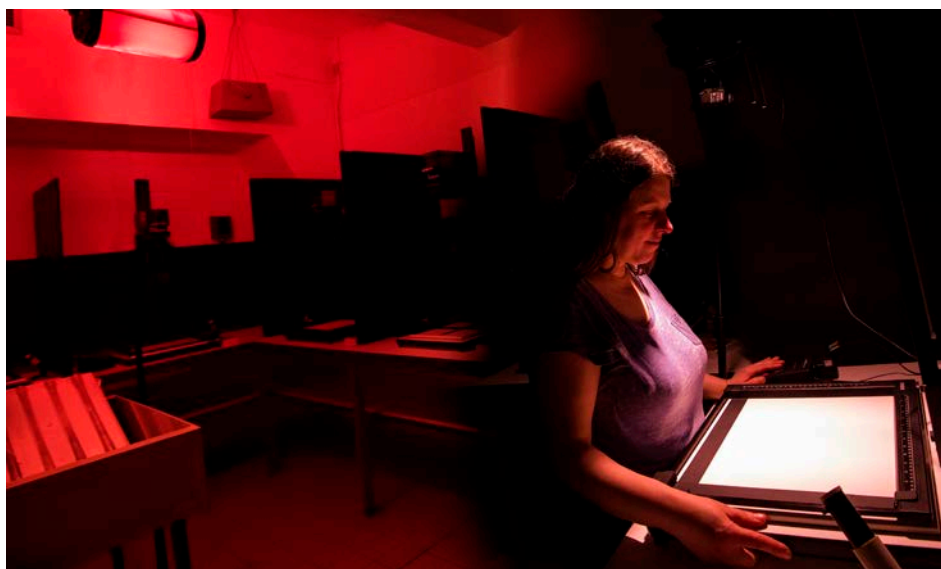
| Fashion and Textiles | | Subject stand: Student Centre |
|---|--------------------------------------|---|
| Employability Q&A panel | 1pm - 1.30pm | Victoria Building, Ground Floor, Room 005 |
| Find out about career opportunities in the creative industries and chat to our course leaders about how we support employability. | | |
| Foundation | | |
| Subject talk | 11am - 11.30am or 1.30pm - 2pm | Hanover Building, Ground Floor, Room 017 |
| Subject tour | 11.30am - 12 noon or 2pm - 2.30pm | Hanover Building, Ground Floor, Foyer |
| BA (Hons) Fashion Design | | |
| Subject talk | 11am - 11.30am or 1.30pm - 2pm | Victoria Building, Third Floor, Room 332 |
| Subject tour | 11.30am - 12 noon or 2pm - 2.30pm | Victoria Building, Third Floor, Room 332 |
| BA (Hons) Fashion Promotion and Marketing | | |
| Subject talk | 11.30am - 12 noon or 2pm - 2.30pm | Victoria Building, Third Floor, Room 335 |
| Subject tour | 12 noon - 12.30pm or 2.30pm - 3pm | Victoria Building, Third Floor, Room 335 |
| BA (Hons) Textile Design | | |
| Subject talk | 11.30am - 12 noon or 1.30pm - 2pm | Victoria Building, Third Floor, Room 320 |
| Subject tour | 12 noon - 12.30pm or 2pm - 2.30pm | Victoria Building, Ground Floor, Room 047 |



| Film and Screen | | Subject stand: Student Centre |
|--|---------------------------------------|--|
| Foundation | | |
| Subject talk | 11am - 11.30am or 1.30pm - 2pm | Hanover Building, Ground Floor, Room 017 |
| Subject tour | 11.30am - 12 noon or 2pm - 2.30pm | Hanover Building, Ground Floor, Foyer |
| BA (Hons) Filmmaking, BA (Hons) Media and Television Production | | |
| Subject talk | 11am - 12 noon or 1.30pm - 2.30pm | Media Factory, Second Floor, Room 210 |
| Subject tour | 12 noon - 12.30pm or 2.30pm to 3pm | Media Factory, Second Floor, Room 210 |
| BA (Hons) Screenwriting with Film, Television and Radio | | |
| Subject talk | 11am - 11.30am or 1.30pm - 2pm | Media Factory, Third Floor, Room 320 |
| Taster session | 11.30am - 12.30pm or 2pm - 2.30pm | Media Factory, Third Floor, Room 320 |
| Subject tour | 12.30pm - 1pm or 2.30pm - 3pm | Media Factory, Third Floor, Room 320 |

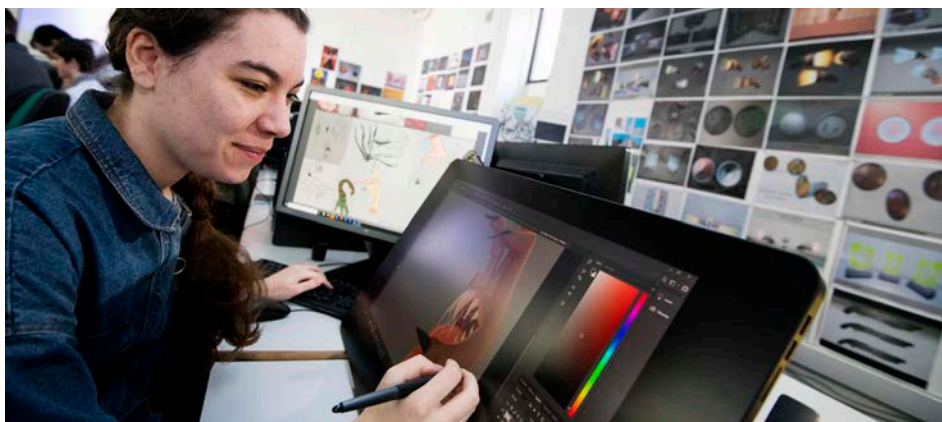


| Fine Art and Photography | | Subject stand: Student Centre |
|---|--------------------------------------|---|
| Employability Q&A panel | 1pm - 1.30pm | Victoria Building, Ground Floor, Room 005 |
| Find out about career opportunities in the creative industries and chat to our course leaders about how we support employability. | | |
| Foundation | | |
| Subject talk | 11am - 11.30am or 1.30pm - 2pm | Hanover Building, Ground Floor, Room 017 |
| Subject tour | 11.30am - 12 noon or 2pm - 2.30pm | Hanover Building, Ground Floor, Foyer |
| BA (Hons) Fine Art | | |
| Subject talk | 11.30am - 12 noon or 2pm - 2.30pm | Hanover Building, First Floor, Room 103 |
| Subject tour | 12 noon - 12.30pm or 2.30pm - 3pm | Hanover Building, Ground Floor, Foyer |
| BA (Hons) Photography | | |
| Subject talk | 11.30am - 12 noon or 1.30pm - 2pm | Victoria Building, Second Floor, Room 216 |
| Subject tour | 12 noon - 12.30pm or 2pm - 2.30pm | Victoria Building, Second Floor, Room 216 |



| Forensic Science | | Subject stand: Foster Building |
|--|-----------------------------------|---|
| Forensic Science courses: BSc (Hons) Forensic Science, BSc (Hons) Forensic Science and Criminal Investigation | | |
| Subject talk | 11am - 11.30am or 1.30pm - 2pm | Foster Building, Ground Floor, Lecture Theatre 4 |
| Subject tour | 11.30am - 12.30pm or 2pm - 3pm | Foster Building, Ground Floor, Lecture Theatre 4 |

| Games and Animation | | Subject stand: Student Centre |
|---|--------------------------------------|---|
| Foundation | | |
| Subject talk | 11am - 11.30am or 1.30pm - 2pm | Hanover Building, Ground Floor, Room 017 |
| Subject tour | 11.30am - 12 noon or 2pm - 2.30pm | Hanover Building, Ground Floor, Foyer |
| BA (Hons) Animation | | |
| Subject talk | 11am - 11.30am or 1.30pm - 2pm | Victoria Building, Ground Floor, Room 015 |
| Subject tour | 11.30am - 12 noon or 2pm - 2.30pm | Victoria Building, Ground Floor, Room 015 |
| BA (Hons) Games Design, BA (Hons) Game Art | | |
| Subject talk | 11.30am - 12 noon or 1.30pm - 2pm | Victoria Building, Ground Floor, Room 019 |
| Subject tour | 12 noon - 12.30pm or 2pm - 2.30pm | Victoria Building, Ground Floor, Room 019 |



| Health Professions | | Subject stand: Harrington Building |
|---|---|---|
| BSc (Hons) Counselling and Psychotherapy | | |
| Subject talk with Q&A | 11.30am - 12.30pm or 1.30pm - 2.30pm | Harrington Building, Third Floor, Room 333 |
| FdA Health and Social Care, BSc (Hons) Health and Social Care (Top-up) | | |
| Subject talk | 11am - 11.30am or 1.30pm - 2pm | Greenbank Building, Third Floor, Room 347 |
| BSc (Hons) Occupational Therapy | | |
| Subject talk | 11am - 12 noon or 1.30pm - 2.30pm | Brook Building, Ground Floor, Room 015 |
| Subject tour | 12 noon - 12.30pm or 2.30pm - 3pm | Entrance of Eden Building |
| BSc (Hons) Operating Department Practice | | |
| Subject talk with Q&A | 11am - 11.30am or 2pm - 2.30pm | Greenbank Building, First Floor, Room 175 |
| Taster session | 11.30am - 12 noon or 2.30pm - 3pm | Greenbank Building, First Floor, Room 175 |
| BSc (Hons) Paramedic Science | | |
| Subject talk with Q&A | 12.10pm - 1.10pm | Greenbank Building, Ground Floor, Lecture Theatre |
| Subject talk with Q&A | or 2pm - 3pm | Greenbank Building, Second Floor, Room 268 |
| Subject tour | 1.10pm - 1.40pm or 3pm - 3.30pm | Greenbank Building, Ground Floor, Room 001 |
| BSc (Hons) Physiotherapy | | |
| Subject talk | 11am - 12 noon or 1.30pm - 2.30pm | Brook Building, Second Floor, Room 213 |
| Subject tour | 12 noon - 12.30pm or 2.30pm - 3pm | Brook Building, Second Floor, Room 213 |

Humanities and Languages

Subject stand: Harrington Building

Education courses: BA (Hons) Education, BA (Hons) Education and Psychology, BA (Hons) Education with Humanities

| | | |
|----------------------------------|---|---|
| Subject talk with Q&A | 11.30am - 12.30pm or 1.30pm - 2.30pm | Adelphi Building, First Floor, Lecture Theatre 3 |
|----------------------------------|---|---|

English courses: BA (Hons) English and Creative Writing, BA (Hons) English Language and Linguistics, BA (Hons) English Literature

| | | |
|----------------------------------|---|---------------------------------------|
| Subject talk with Q&A | 11.30am - 12.30pm or 1.30pm - 2.30pm | Media Factory, Second Floor, Room 220 |
|----------------------------------|---|---------------------------------------|

BA (Hons) TESOL and a Modern Language

| | | |
|----------------------------------|---|---|
| Subject talk with Q&A | 11.30am - 12.30pm or 1.30pm - 2.30pm | Adelphi Building, First Floor, Lecture Theatre 5 |
|----------------------------------|---|---|

BA (Hons) History

| | | |
|----------------------------------|---|--------------------------------------|
| Subject talk with Q&A | 11.30am - 12.30pm or 1.30pm - 2.30pm | Media Factory, Third Floor, Room 315 |
|----------------------------------|---|--------------------------------------|

BA (Hons) Sociology

| | | |
|----------------------------------|---|---|
| Subject talk with Q&A | 11.30am - 12.30pm or 1.30pm - 2.30pm | Greenbank Building, Third Floor, Room 348 |
|----------------------------------|---|---|

BA (Hons) BSL and Deaf Studies

| | | |
|----------------------------------|---|---|
| Subject talk with Q&A | 11.30am - 12.30pm or 1.30pm - 2.30pm | Adelphi Building, First Floor, Lecture Theatre 2 |
|----------------------------------|---|---|

Languages courses: BA (Hons) Chinese Studies, BA (Hons) Japanese Studies, BA (Hons) Korean Studies, BA (Hons) Modern Languages (British Sign Language, Chinese, Japanese, Korean, and Spanish)

| | | |
|----------------------------------|---|---|
| Subject talk with Q&A | 11.30am - 12.30pm or 1.30pm - 2.30pm | Adelphi Building, First Floor, Lecture Theatre 4 |
|----------------------------------|---|---|

Facilities tour

Visit the Worldwide Open Area (Adelphi, First Floor) for a facilities tour at 12 noon - 12.30pm or 2.30pm - 3pm.

You can also stop by the Worldwide stand in the Student Centre.



| Journalism | | Subject stand: Student Centre |
|------------------------------------|--------------------------------------|--|
| Foundation | | |
| Subject talk | 11am - 11.30am or 1.30pm - 2pm | Hanover Building, Ground Floor, Room 017 |
| Subject tour | 11.30am - 12 noon or 2pm - 2.30pm | Hanover Building, Ground Floor, Foyer |
| BA (Hons) Journalism | | |
| Subject talk | 11am - 11.30am or 1.30pm - 2pm | Greenbank Building, Ground Floor, Room 080 |
| Taster session | 11.30am - 12 noon or 2pm - 2.30pm | Greenbank Building, Ground Floor, Room 080 |
| Subject tour | 12 noon - 12.30pm or 2.30pm - 3pm | Greenbank Building, Ground Floor, Room 080 |
| BA (Hons) Sports Journalism | | |
| Subject talk | 11am - 11.30am or 1.30pm - 2pm | Greenbank Building, Ground Floor, Room 079 |
| Taster session | 11.30am - 12.30pm or 2pm - 2.30pm | Greenbank Building, Ground Floor, Room 079 |
| Subject tour | 12.30pm - 1pm or 2.30pm - 3pm | Greenbank Building, Ground Floor, Foyer |



| Law, Criminology and Policing | | Subject stand: Foster Building |
|---|--------------------------------------|---|
| Criminology courses: BA (Hons) Criminology and Criminal Justice, BA (Hons) Criminology and Sociology | | |
| Subject talk with Q&A | 11am - 11.45am or 1.30pm - 2.15pm | Leighton Building, Ground Floor, Room 002 |
| Subject showcase | 11.45am - 12.30pm or 2.15pm - 3pm | Leighton Building, Ground Floor, Room 002 |
| Law courses: LLB (Hons) Law, LLB (Hons) Law with Business, LLB (Hons) Law with Criminology | | |
| Subject talk with Q&A | 11am - 12 noon or 1.30pm - 2.30pm | Harris Building, First Floor, Room 155 |
| Subject tour | 12 noon - 12.30pm or 2.30pm - 3pm | Harris Building, First Floor, Room 155 |
| Policing courses: BSc (Hons) Professional Policing, BSc (Hons) Policing, Law Enforcement and Investigation, BSc (Hons) Cyber Investigations with Digital Forensics | | |
| Subject talk | 11am - 11.30am or 1.30pm - 2pm | Leighton Building, First Floor, Room 111 |
| Taster session | 11.30am - 12.30pm or 2pm - 3pm | Leighton Building, First Floor, Room 111 |

| Maths and Physical Sciences | | Subject stand: Engineering Innovation Centre |
|---|---|--|
| Welcome talk | 11am - 11.30am | Engineering Innovation Centre, Third Floor, Room 301 |
| Parents and carers Q&A | 11.35am - 12.05pm or 2.05pm - 2.35pm | Engineering Innovation Centre, Third Floor, Room 317 |
| BSc (Hons) Mathematics | | |
| Taster session | 11.30am - 12.45pm | Engineering Innovation Centre, Third Floor, Room 301 |
| Physics and Astrophysics courses: BSc (Hons) Astrophysics, BSc (Hons) Physics, BSc (Hons) Physics with Astrophysics, MPhys (Hons) Astrophysics | | |
| Subject talk and taster | 11.40am - 12.30pm | Maudland Building, Second Floor, Room 221 |
| Physics - specialist taster session & tour | 12.30pm - 1.30pm | Maudland Building, Second Floor, Room 247 |
| Astrophysics - specialist taster session & tour | 1pm - 3pm | Coach to Alston Observatory departs from Foster Garden (opposite Sir Tom Finney Sports Centre) |

Medicine, Dentistry, Audiology and Ophthalmic Dispensing

Subject stand: Harrington Building

Dentistry courses: BSc (Hons) Clinical Dental Technology, BDS Dental Surgery, BSc (Hons) Dental Therapy

| | | |
|---------------------|--------------------------------------|--|
| Subject talk | 11am - 12 noon or 1.30pm - 2.30pm | Allen Building, Ground Floor, Room 004 |
|---------------------|--------------------------------------|--|

| | | |
|---------------------|--------------------------------------|--|
| Subject tour | 12 noon - 12.30pm or 2.30pm - 3pm | Allen Building, Ground Floor, Room 004 |
|---------------------|--------------------------------------|--|

MBBS Medicine and Surgery

| | | |
|---------------------|--------------------------------------|--|
| Subject talk | 11am - 11.45am or 1.30pm - 2.15pm | Brook Building, Fourth Floor, Room 438 |
|---------------------|--------------------------------------|--|

| | | |
|-----------------------|--------------------------------------|---|
| Taster session | 11.45am - 12.30pm or 2.15pm - 3pm | Harrington Building, Second Floor, Room 223 |
|-----------------------|--------------------------------------|---|

FdSc Hearing Aid Audiology

| | | |
|---------------------|-------------------|--|
| Subject talk | 11.30am - 12 noon | Harrington Building, First Floor, Room 104 |
|---------------------|-------------------|--|

| | | |
|---------------------|-------------------|--|
| Subject tour | 12 noon - 12.30pm | Harrington Building, First Floor, Room 104 |
|---------------------|-------------------|--|

BSc (Hons) Ophthalmic Dispensing

| | | |
|---------------------|----------------|---|
| Subject talk | 11am - 11.30am | Harrington Building, Third Floor, Room 342b |
|---------------------|----------------|---|

| | | |
|---------------------|-------------------|---|
| Subject tour | 11.30am - 12 noon | Harrington Building, Third Floor, Room 342b |
|---------------------|-------------------|---|

MPAS (Hons) Physician Associate Studies

| | | |
|---------------------|--------------------------------------|--|
| Subject talk | 11am - 11.45am or 1.30pm - 2.15pm | Harrington Building, First Floor, Room 108 |
|---------------------|--------------------------------------|--|

| | | |
|---------------------|--------------------------------------|---|
| Subject tour | 11.45am - 12.30pm or 2.15pm - 3pm | Harrington Building, Second Floor, Room 223 |
|---------------------|--------------------------------------|---|



| Nursing and Midwifery | | Subject stand: Harrington Building |
|---|--------------------------------------|--|
| Midwifery courses: BSc (Hons) Midwifery, BSc (Hons) Midwifery (Shortened) | | |
| Subject talk with Q&A | 11am - 12 noon or 2pm - 3pm | Adelphi Building, Ground Floor, Lecture Theatre 1 |
| Taster session: Clinical skills | 12 noon - 12.30pm or 1.30pm - 2pm | Greenbank Building, First Floor, Room 170 |
| Nursing courses: BSc (Hons) Nursing with Registered Nurse (Adult), BSc (Hons) Nursing with Registered Nurse (Children & Young People), BSc (Hons) Nursing with Registered Nurse (Learning Disabilities), BSc (Hons) Nursing with Registered Nurse (Mental Health), BSc (Hons) Nursing in General Practice (Top-up), FdSc Nursing Associate | | |
| Subject talk with Q&A | 11am - 12 noon or 1.30pm - 2.30pm | Greenbank Building, Ground Floor, Lecture Theatre |
| Subject simulation showcase | 12 noon - 12.30pm or 2.30pm - 3pm | Harrington Building, Nursing and Midwifery Subject Stand |
| Facilities tour | All day drop in | Harrington Building, Nursing and Midwifery Subject Stand |

| Performance and Music | | Subject stand: Student Centre |
|---|--------------------------------------|---|
| Employability Q&A session | 1pm - 1.30pm | Victoria Building, Ground Floor, Room 005 |
| Find out about career opportunities in the creative industries and chat to our course leaders about how we support employability. | | |
| BA (Hons) Acting | | |
| Subject talk | 11am - 11.30am or 1.30pm - 2pm | Media Factory, Ground Floor, Room 007 |
| Subject tour | 11.30am - 12 noon or 2pm - 2.30pm | Media Factory, Ground Floor, Room 007 |
| BA (Hons) Music Theatre | | |
| Subject talk | 11.30am - 12 noon or 1.30pm - 2pm | Media Factory, Third Floor, Room 317 |
| Subject tour | 12 noon - 12.30pm or 2pm - 2.30pm | Media Factory, Third Floor, Room 317 |
| BA (Hons) Sound Design | | |
| Subject talk | 11am - 11.30am or 1.30pm - 2pm | Media Factory, Second Floor, Room 216 |
| Subject tour | 11.30am - 12 noon or 2pm - 2.30pm | Media Factory, Second Floor, Room 216 |

Pharmacy and Biosciences

Subject stand: Foster Building

Biosciences courses: BSc (Hons) Biology, BSc (Hons) Biomedical Science, BSc (Hons) Healthcare Science, BSc (Hons) Microbiology, BSc (Hons) Pharmacology, BSc (Hons) Physiology and Pharmacology, Foundation Year pathways

| | | |
|---------------------|--------------------------------------|---|
| Subject talk | 11.30am - 12 noon or 1.30pm - 2pm | Foster Building, Ground Floor, Lecture Theatre 2 |
| Subject tour | 12 noon - 12.30pm or 2pm - 2.30pm | Maudland Building, Ground Floor, Foyer |

BSc (Hons) Neuroscience

| | | |
|----------------------------------|--------------------------------------|---|
| Subject talk with Q&A | 11am - 12 noon or 1.30pm - 2.30pm | Darwin Building, Second Floor, Room 247 |
| Subject tour | 12 noon - 12.30pm or 2.30pm - 3pm | Darwin Building, Second Floor, Room 247 |

MPharm (Hons) Pharmacy

| | | |
|---------------------|--------------------------------------|--|
| Subject talk | 11am - 11.30am or 2pm - 2.30pm | Maudland Building, First Floor, Room 143 |
| Subject tour | 11.30am - 12 noon or 2.30pm - 3pm | Maudland Building, First Floor, Room 143 |



Psychology

Subject stand: Foster Building

Psychology courses: BSc (Hons) Psychology, BSc (Hons) Clinical Psychology, BSc (Hons) Psychology of Child Development, BSc (Hons) Forensic Psychology, BSc (Hons) Neuropsychology, BSc (Hons) Psychology and Criminology, BSc (Hons) Psychology with Psychotherapy and Counselling

| | | |
|----------------------------------|--------------------------------------|---|
| Subject talk with Q&A | 11am - 12 noon or 1.30pm - 2.30pm | Darwin Building, Ground Floor, Lecture Theatre |
|----------------------------------|--------------------------------------|---|

| | | |
|---------------------|--------------------------------------|---|
| Subject tour | 12 noon - 12.30pm or 2.30pm - 3pm | Darwin Building, Ground Floor, Lecture Theatre |
|---------------------|--------------------------------------|---|

Social Work, Social Care and Community

Subject stand: Harrington Building

Social Work, Care and Community courses: BA (Hons) Applied Community and Social Care Studies, BA (Hons) Children, Schools and Families (Graduate Practitioner), BA (Hons) Social Work, Foundation Year pathways

| | | |
|---------------------|-----------------------------------|--|
| Subject talk | 11am - 11.30am or 2pm - 2.30pm | Brook Building, Ground Floor, Room 008 |
|---------------------|-----------------------------------|--|

BA (Hons) Applied Community and Social Care Studies

| | | |
|-----------------------|--------------------------------------|---------------------------------------|
| Taster session | 11.30am - 12 noon or 2.30pm - 3pm | Brook Building, First Floor, Room 105 |
|-----------------------|--------------------------------------|---------------------------------------|

BA (Hons) Children, Schools and Families (Graduate Practitioner)

| | | |
|-----------------------|--------------------------------------|---------------------------------------|
| Taster session | 11.30am - 12 noon or 2.30pm - 3pm | Brook Building, First Floor, Room 111 |
|-----------------------|--------------------------------------|---------------------------------------|

BA (Hons) Social Work

| | | |
|-----------------------|--------------------------------------|--|
| Taster session | 11.30am - 12 noon or 2.30pm - 3pm | Brook Building, Ground Floor, Room 008 |
|-----------------------|--------------------------------------|--|



| Sport and Nutrition | | Subject stand: Student Centre |
|--|------------------------------------|--|
| Sports Arena tour | 12.40pm - 1.20pm | Coach departs from Maudland Road next to the Engineering Innovation Centre |
| BSc (Hons) Football Studies, BA (Hons) Physical Education and Sport, BSc (Hons) Sport Business Management, BSc (Hons) Sport Coaching, Foundation Year pathway | | |
| Subject talk | 11am - 12.20pm or 1.30pm - 2.50pm | Greenbank Building, Second Floor, Room 202 |
| BA (Hons) Leadership through Outdoor Adventure | | |
| Subject talk with Q&A | 11.30am - 12.30pm or 2pm - 3pm | Greenbank Building, Second Floor, Room 276 |
| BSc (Hons) Nutrition | | |
| Subject talk and tour | 11am - 12 noon or 1.30pm to 2.30pm | Maudland Building, Third Floor, Room 308 |
| BSc (Hons) Sport & Exercise Science | | |
| Subject talk and tour | 11am - 12 noon or 1.30pm - 2.30pm | Darwin Building, Second Floor, Room 254 |
| BSc (Hons) Sports Therapy | | |
| Subject talk | 11am - 11.30am or 1.30pm - 2pm | Brook Building, Ground Floor, Room 013 |
| Taster session | 11.30am - 12.30pm or 2pm - 3pm | Brook Building, Ground Floor, Room 032 |

The Sports Arena tour takes around 40 minutes

The coach departs from Maudland Road, at 12.40pm



BVMS Veterinary Medicine and Surgery, BSc (Hons) Bioveterinary Sciences, Foundation Year pathways

Subject talk 11am - 12 noon Harrington Building, Ground Floor, Lecture Theatre

Introduction to clinical skills All day drop in 9am - 3pm Greenbank Building, Ground Floor, Room 031

Explore how clinical models are used to enhance practical teaching. While technology does not replace learning with real animals, learning with simulated patients has been demonstrated to improve confidence in students, as well as improving the welfare of animals used in teaching.

Tour of School of Veterinary Medicine All day drop in 9am - 3pm Greenbank Building, Ground Floor, Foyer

Explore our brand-new, state-of-the-art veterinary medicine facilities including anatomy and microscopy labs, mock surgery and dental theatres, 4D immersive teaching room, a hydrotherapy room and a diagnostic imaging suite. These facilities will shape your veterinary medicine education.



My Open Day

With so much to see and do at our Open Day, it's worth making a plan. Our programme is designed to be flexible so you can pick and mix what you want to attend, at a time that works for you.

Morning

| Time: | Activity: | Location: |
|-------|-----------|-----------|
| | | |
| | | |
| | | |
| | | |
| | | |
| | | |
| | | |
| | | |
| | | |

If you require assistance accessing parenting facilities, a prayer room or quiet space please chat to our friendly team at the information desk located on the Lower Ground Floor of the Student Centre.

Prayer Rooms

- Oasis Centre
- Student Centre, First Floor, Rooms 145 and 146

Quiet Rooms

- Oasis Centre

Parenting Rooms

- Student Centre, Lower Ground, Room 017
- Darwin Building, Second Floor, Room 256



Afternoon

Time:

Activity:

Location:

This image shows a single sheet of white paper with horizontal blue ruling lines. The lines are evenly spaced and run across the width of the page. There are no margins or other markings on the paper.

Redeem your tokens here

- **Café 1828 (Student Centre)** - drink voucher and treat token
- **Harrington Refectory (Harrington Building)**
 - drink voucher and treat token
 - breakfast barmes £1 until 11.30am
- **Foster Refectory (Foster Building)**
 - drink voucher and treat token
 - breakfast barmes £1 until 11.30am

Reminder - Our campus is cashless, all eateries accept card or contactless payments.



So much more to offer

Explore our information stands **in our Student Centre (9am - 3pm)**.
Chat to our helpful staff and get your questions answered.



Global opportunities

Equip yourself for a globe-trotting career and embrace new horizons. Find out about opportunities to spend time studying and working overseas to experience other cultures.

**Stand located in the Student Centre,
Upper Ground Floor, Study Area**



Students' Union (SU)

Don't forget to visit the SU team and find out about our clubs and societies.

**Stand located in the Student Centre,
Upper Ground Floor, Foyer**



Travel and parking

Meet our helpful and friendly Travel and Parking Team who will be happy to talk you through our Parking Permit scheme, parking facilities and travel options.

**Stand located in the Student Centre,
Upper Ground Floor, Social Space**



Worldwise language learning

Whether you prefer learning in the classroom or online, the Worldwise Centre offers flexible options to suit your needs. Study a language through a Certificate programme or explore our online learning pathways. You will also benefit from conversation classes and a wide range of resources to support your journey.

lancashire.ac.uk/worldwise

**Stand located in the Student Centre,
Upper Ground Floor, Study Area**

Chat to our current students

Look out for our friendly Student Ambassadors wearing red tops, who are on hand to answer any questions you have about student life, and what it's really like to study here.



Sport and physical activity

Make the most of your time at university with our wide range of sport and physical activity opportunities. Whether you're a competitive athlete or just looking to stay active and have fun, we have something for everyone.

Enjoy access to:

- **Excellent facilities** including the Sir Tom Finney Sports Centre and our state-of-the-art Sports Arena.
- **Moves+ app** to track your activity and earn rewards while staying motivated.
- **Sports scholarship programme** worth up to £5,000.
- **£99 annual gym membership** providing affordable access to our fully equipped gym facilities.
- **Social sport programme** delivered in partnership with the Students' Union, offering fun, inclusive activities for all abilities.

Stay active, connect with others, and make your wellbeing a priority during your time at university.

Come and chat to us at our stand in the Student Centre.



Campus map



Find any building
and navigate campus

[View our interactive map](#)



Car parks



**Check-in, Student Support
teams and Tours**



Complimentary refreshments



Subject stands

Full list of subject stands on pages 14-33



Treat tokens can be used here



Key walking routes

University accommodation



Derwent Hall PR1 7QR



Douglas Hall PR1 7QR*



iQ Kopa PR1 1LR



Pendle Hall PR1 7EA*



Ribble Hall PR1 7QS



Roeburn Hall PR2 2QQ



Whitendale Hall PR1 7BG

See pages 10-11 for details on how to visit.

*Not open for viewing today.



Getting to our campus

Our Preston Campus is easily accessible by train, bus or car.
We're just a 10-minute walk from either Preston railway or bus station.
Find travel directions and a campus map at lancashire.ac.uk/open-days

Parking

Free university car parks (subject to availability):

| Car Park | Location |
|----------------------|----------|
| Fylde Road Car Park* | PR1 2XN |
| Roeburn Car Park | PR2 2QQ |
| Leighton Car Park | PR1 8RU |
| Victoria Car Park | PR1 7QS |
| Harrington Car Park | PR1 7BG |

*This is our largest car park and you'll easily be able to locate a parking space.

Any questions?

We hope you have all the information you need to enjoy your Open Day, but if you have any questions please get in touch - opendays@lancashire.ac.uk

Search @UniLancashire and join the conversation on social media.



We have proudly changed our name to the University of Lancashire

New name, same forward-thinking university.

lancashire.ac.uk



Previously known as the University of Central Lancashire

We've made every effort to ensure that this booklet is as accurate as possible at the time of printing (September 2025). Please see our website for the very latest information.